

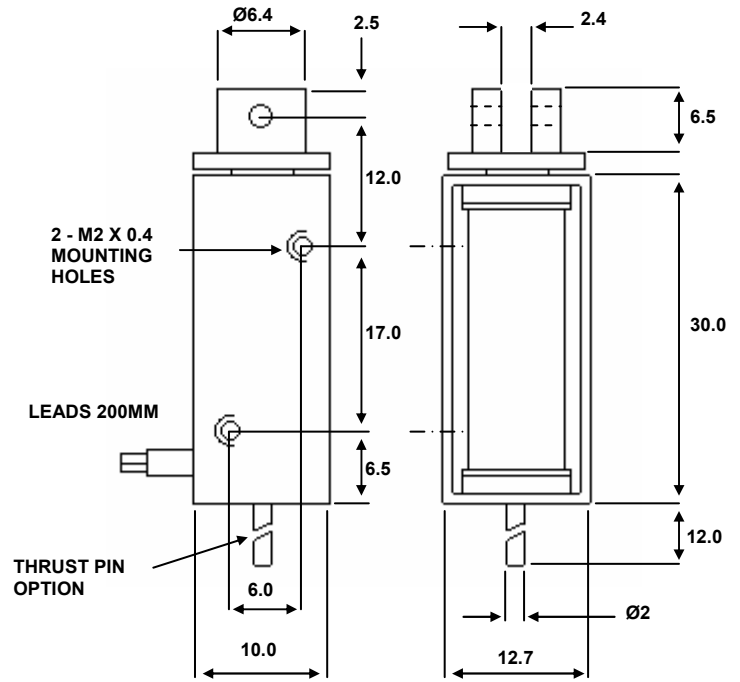


BDC.0
DC LINEAR SOLENOID

Availability
For DC only.
PULL - THRUST - PULL & THRUST
For operation over 50V
please enquire as to feasibility.

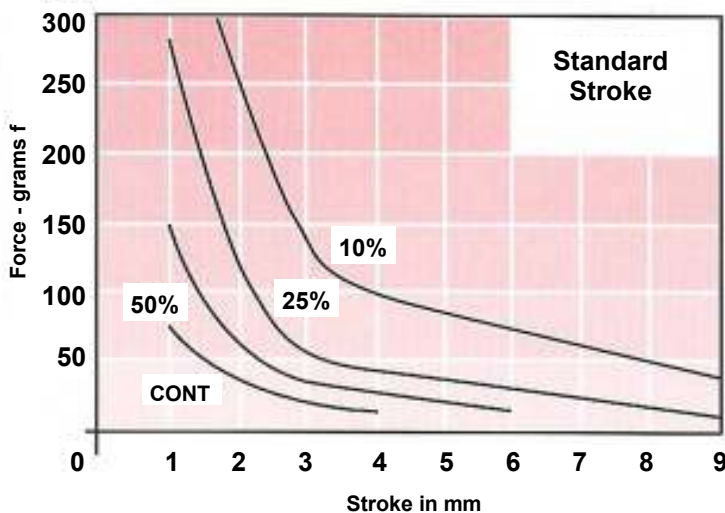
Solenoid shown in energised position

Weight complete 19g
Plunger weight 4g max



DIMENSIONS IN MM

BDC0



Forces shown are at working temperature
Cold forces are higher

DC Watts
Cont Rtg = 2W
50% Rtg = 4W
25% Rtg = 8W
10% Rtg = 20W

HE & BS Benson Ltd

1 Laureate Industrial Estate, Exning Road, Newmarket, Suffolk CB8 0AR
Tel. +44 (0) 1638 663535 / 663130 Fax. +44 (0) 1638 667434
sales@hebsenson.co.uk - technical@hebsenson.co.uk