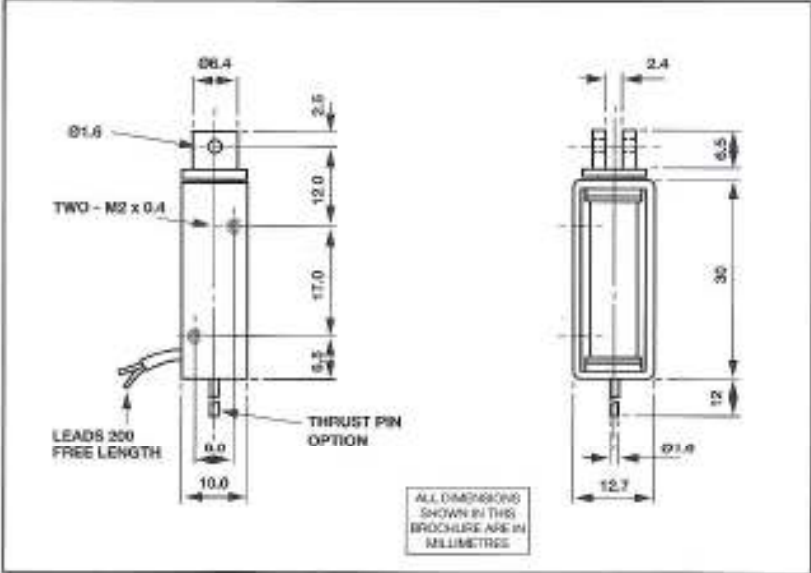




BDC.0
DC LINEAR SOLENOID

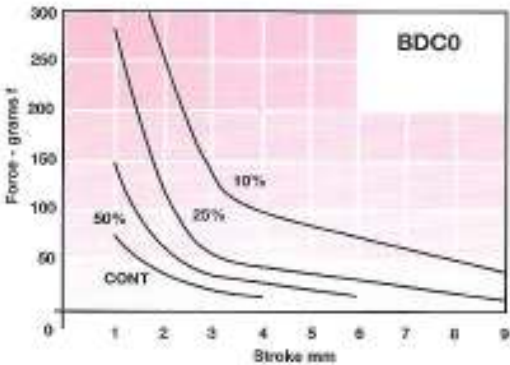


Availability
For DC only.
PULL • THRUST • PULL & THRUST
For operation over 24V please
enquire as to feasibility
See Chart page 15

Solenoid shown in energised position

Weight complete 19g approx.
Plunger weight 4g max.

BDC0



Forces shown are at working temperature.

Cold forces are higher

DC Watts
Cont Rtg = 2W
50% Rtg = 4W
25% Rtg = 8W
10% Rtg = 20W

HE & BS Benson Limited

1 Laureate Industrial Estate, Exning Road, Newmarket CB8 OAR
Tel: 01638 663535 & 663130 Fax: 01638 667434

www.hebsenson.co.uk sales@hebsenson.co.uk info@hebsenson.co.uk