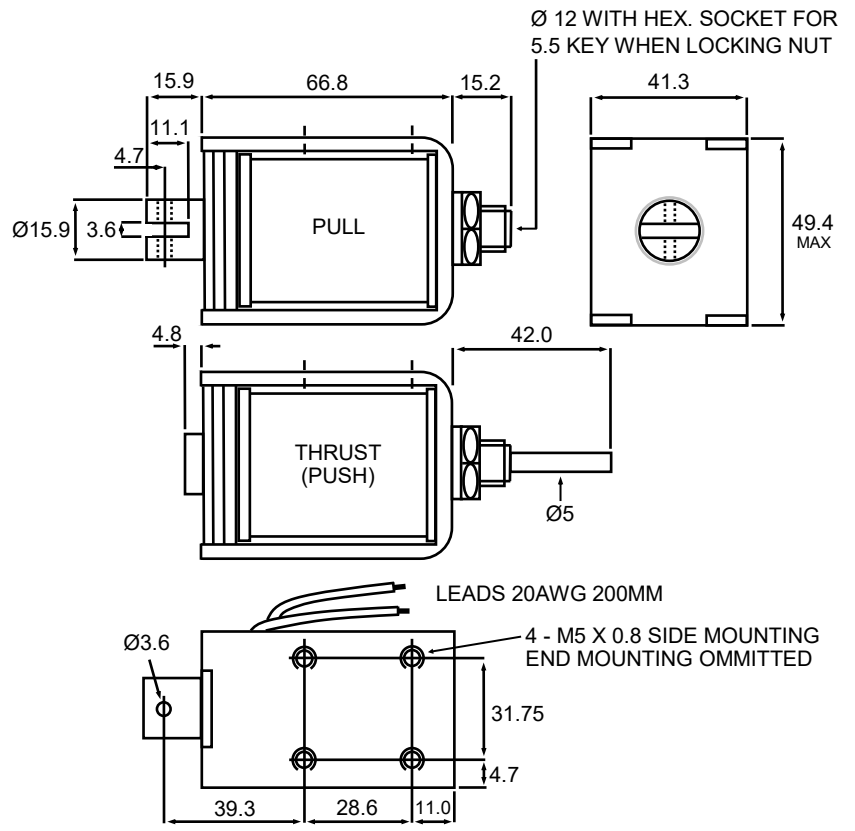


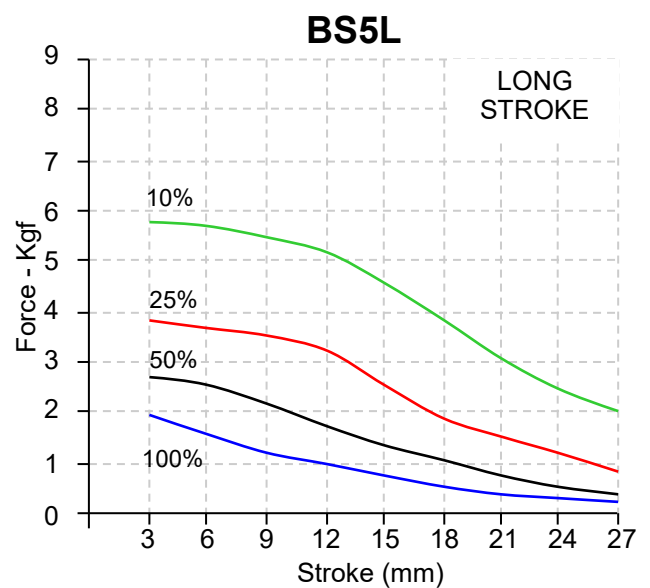
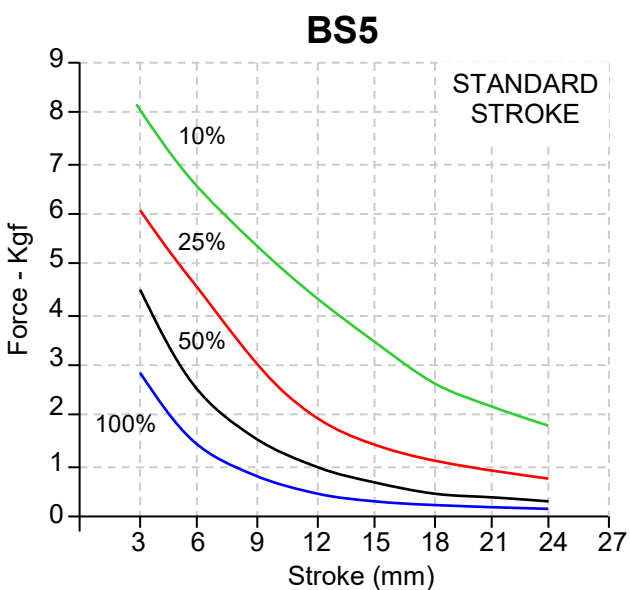
# BS5 DC LINEAR SOLENOID

- Availability**  
DC Standard Stroke  
PULL - THRUST - PULL & THRUST  
DC Long Stroke
- Solenoid shown in energised position**
- Weight complete 590g approx  
Plunger weight 95g max
- Forces shown are at working temperature



DIMENSIONS IN MM

**DC Watts**  
 100% Rtg = 16W  
 50% Rtg = 32W  
 25% Rtg = 64W  
 10% Rtg = 160W



**\*\* Please note: Fixing, plunger coupling, thrust rods and lead length can all be customised \*\***  
 We reserve the right to alter or amend designs without prior notice.