



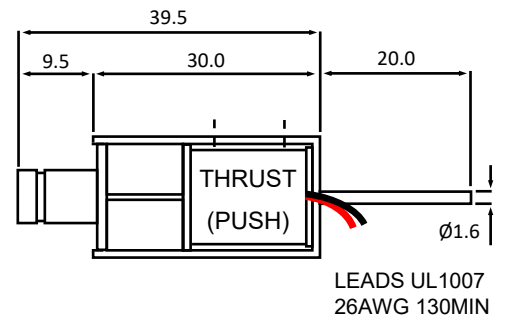
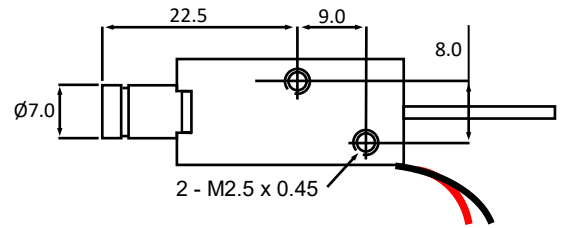
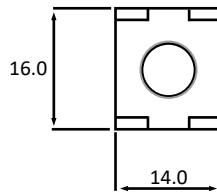
BLM0730S
DC LATCHING SOLENOID

DC Thrust Type
Pull/Thrust Type Available
Standard Voltage 12V or 24V

Solenoid shown in energised position

Weight complete 34g
Plunger weight 8g

Solenoid CLOSSES with
RED Lead + VE
Solenoid OPENS with
BLACK Lead + VE

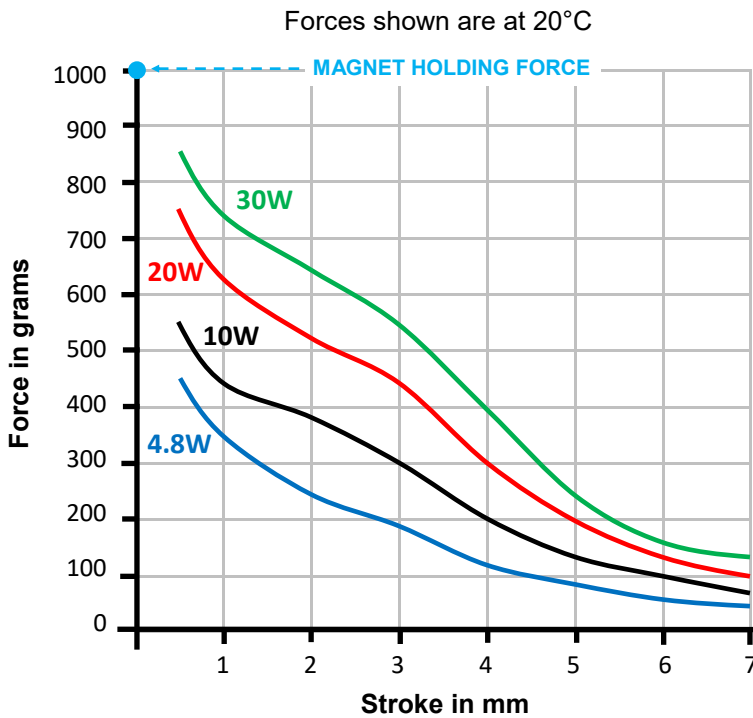


DIMENSIONS IN MM

LEADS UL1007
26AWG 130MIN

De-latch power - 4.8W

(Mechanical assistance is required when de-latching,
ie via mechanism or return spring)



DC Watts
63% Rtg = 4.8W
30% Rtg = 10W
15% Rtg = 20W
10% Rtg = 30W

** Please note: Fixing, plunger coupling, thrust rods and lead length can all be customised **

We reserve the right to alter or amend designs without prior notice.

HE & BS Benson Ltd

1 Laureate Industrial Estate, Exning Road, Newmarket, Suffolk UK CB8 0AR

T. +44(0)1638 663535 — 663130 E. sales@hebsbenson.co.uk www.hebsbenson.co.uk